



**PROBATION DEPARTMENT
COUNTY OF SAN MATEO**

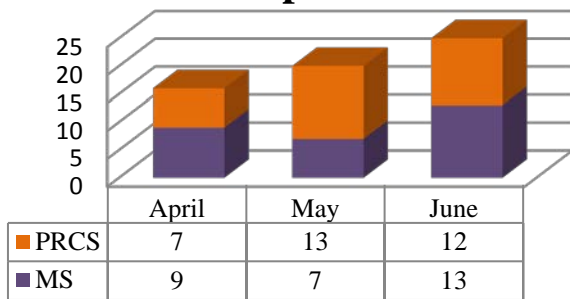
**Quarterly Post-Release Community and Mandatory Supervision Update
April-June 2016: 61 New Supervisees**

*since realignment began in October 2011, there have been one thousand four hundred and eighty-six (1486) supervisees.

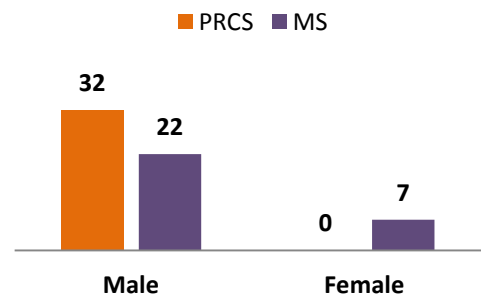
FY 2015-16 Fourth Quarter Highlights and Year-to-Date (YTD) totals:

- | | |
|---|--|
| <ul style="list-style-type: none"> • 61 new supervisees • PRCS supervisees outnumbered MS supervisees • 32% of supervisees live out of county (YTD: 32%) | <ul style="list-style-type: none"> • 66 revocations were filed (YTD:517) • 14% of violations were property crimes (YTD: 15%) • 69% of terminations were successful (YTD: 67%) |
|---|--|

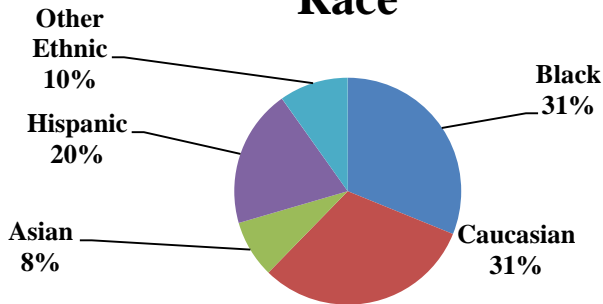
PRCS and MS Released to SMC Supervision



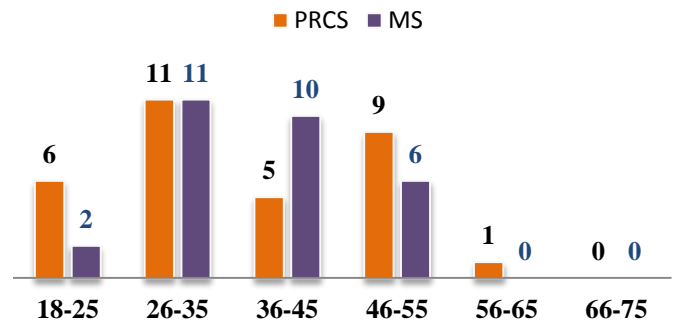
Gender



Race



Age



PRCS	
City of Residence	Number
Redwood City	5
San Mateo	4
Daly City	3
East Palo Alto	2
Foster City	1
Brisbane	1
San Bruno	1
Menlo Park	1
Transient	8
San Francisco	4
Other County in State	2
Total Supervisees	32

MS	
City of Residence	Number
East Palo Alto	3
Pacifica	2
Redwood City	2
Daly City	1
San Mateo	1
Transient	3
San Francisco	9
Other County in State	8
Total Supervisees	29

Terminations, Revocations and Flashes

There were twenty-nine (29) terminations during the reporting period. Sixty-nine percent (69%) were successful.

Total # of Supervisees Successfully Terminated		Total # of Supervisees Unsuccessfully Terminated	
PRCS – 12	MS – 8	PRCS – 1	MS –8
<ul style="list-style-type: none"> • Early Terminations: 4 • Normal Terminations: 8 			

In the reporting period, we filed a total of sixty-six (66) revocations, with PRCS having thirty-eight (38) and MS having twenty-eighty (28) revocations. The breakdown by violation category is below:

Violation Type	PRCS	MS	Percent of Violations
Property	5	4	14%
Drug/Alcohol	6	9	23%
Crimes Against Persons	15	10	38%
Technical	10	3	20%
Other Crimes	2	2	6%
TOTAL	38	28	100%

Generally, the population is reoffending by committing crimes similar to those for which they are on Realignment, namely non-serious, non-violent, non-serious sex related crimes.

Twenty percent (20%) were for technical violations, a significant decrease increase when compared to the previous quarter (39%). Technical violations of supervision are filed when supervisees abscond or fail to abstain from substance use. It is important to note that the Probation Department usually files formal revocations after lower sanctions have been attempted, including flash incarcerations for PRCS cases. However, at times, officers may decide that a formal revocation is more appropriate than utilizing lower sanctions, depending on the circumstances of the violation. Eighty percent (80%) of the revocations filed were for new law violations involving crimes against persons, property and drug/alcohol related crimes.

There were twenty-three (23) flashes during this reporting period.

There was one (1) PRCS supervisee whose charges were reduced and subsequently terminated because of Prop 47. Five (5) cases were transferred to different counties.

Recidivism Definition

San Mateo County: Arrest and/or Charges Filed within 3 years of Last Incarceration in San Mateo County, including warrant arrests, PTA/Court Sentence but **excludes** PRCS flash incarcerations/Revocation, 647/849B1 (no charges filed) or dropped charges.

Attorney General: An arrest resulting in a charge within three years of an individual’s release from incarceration or placement on supervision for a previous criminal conviction

BSSC: A conviction of a new felony or misdemeanor committed within three years of release from custody or committed within three years of placement on supervision for a previous criminal conviction.

AB109 In-Custody Monthly–April 2016

PC 1170(h): 20 cases

	This Month (Apr 2016)		Last Month (Mar 2016)		This Year Total (Oct '15-Sep '16)		Annual (Oct '14-Sep '15)
Number of new PC1170(h) cases	20		14		117		201 per year
	Straight	Split	Straight	Split	Straight	Split	
	12	8	2	12	43	74	
* Average Length of Stay (ALOS) for PC1170(h) cases	167		266		198		197 days ALOS
	Straight	Split	Straight	Split	Straight	Split	
	109	254	294	261	182	208	
Non-PC1170(h) sentenced cases	165		174		1,063		1713 per year
* Average Length of Stay (ALOS) Non-PC1170(h)	45		42		44		43 days ALOS

*ALOS is determined after credits are applied

Breakdown of PC1170(h) Sentences: 17 were men, 3 were women

Mandatory Supervision Revocation: 3 cases

	This Month (Apr 2016)	Last Month (Mar 2016)	This Year Total (Oct '15-Sep '16)	Annual (Oct '14-Sep '15)
Number of Mandatory Supervision Revoc. cases	3	2	22	35 per year
Average Length of Stay	69	63	113	71 ALOS

*1st MS case appeared in December 2012

Post-Release Community Supervision: 23 cases

There were a total of 23 new local PRCS bookings in April; 13 were booked on a Flash Incarceration (PC3454) and were in custody during the month a total of 78 days or 6 days on average.

10 inmates were booked on a local PRCS revocation (PC3455).

Parole Revocation: 14 cases

There were 14 parole revocation hearings in April. 11 inmates were given revocation sentences and are expected to serve a total of 507 revocation days in custody, or an average of 46 days each.

AB109 Totals

AB109 Stats	Current Year (Oct '15-Sep '16)				Prior Year (Oct '14-Sep '15)	
	Cases Since 10/1/15	Days in Custody	In Custody 4/30/16	% of Population 4/30/16	No. of Cases	Avg. Length of Stay
PC1170(h)	117	23,173	104	11.2%	201	197
MS Revocations	22	2,495	8	0.9%	35	71
PC3056 revocations	55	2,183	16	1.7%	93	44
PC3454	64	454	4	0.4%	174	7
PC3455	53	3,002	14	1.5%	72	75
Total AB109	311	31,307	146	15.7%	575	92

AB109 In-Custody Monthly–May 2016

PC 1170(h): 16 cases

	This Month (May 2016)		Last Month (Apr 2016)		This Year Total (Oct '15-Sep '16)		Annual (Oct '14-Sep '15)
Number of new PC1170(h) cases	16		20		133		201 per year
	Straight	Split	Straight	Split	Straight	Split	
	4	12	12	8	47	86	
* Average Length of Stay (ALOS) for PC1170(h) cases	169		167		195		197 days ALOS
	Straight	Split	Straight	Split	Straight	Split	
	177	166	109	254	181	202	
Non-PC1170(h) sentenced cases	124		165		1,187		1713 per year
* Average Length of Stay (ALOS) Non-PC1170(h)	44		45		44		43 days ALOS

**ALOS is determined after credits are applied*

Breakdown of PC1170(h) Sentences: 11 were men, 5 were women

Mandatory Supervision Revocation: 1 case

	This Month (May 2016)	Last Month (Apr 2016)	This Year Total (Oct '15-Sep '16)	Annual (Oct '14-Sep '15)
Number of Mandatory Supervision Revoc. cases	1	3	23	35 per year
Average Length of Stay	143	69	115	71 ALOS

**1st MS case appeared in December 2012*

Post-Release Community Supervision: 19 cases

There were a total of 19 new local PRCS bookings in May; 10 were booked on a Flash Incarceration (PC3454) and were in custody during the month a total of 72 days or 7 days on average.

9 inmates were booked on a local PRCS revocation (PC3455). PRCS inmates were in custody 558 days this month.

Parole Revocation: 8 cases

There were 8 parole revocation hearings in May. 8 inmates were given revocation sentences and are expected to serve a total of 482 revocation days in custody, or an average of 60 days each.

AB109 Totals

AB109 Stats	<i>Current Year (Oct '15-Sep '16)</i>				<i>Prior Year (Oct '14-Sep '15)</i>	
	Cases Since 10/1/15	Days in Custody	In Custody 5/31/16	% of Population 5/31/16	No. of Cases	Avg. Length of Stay
PC1170(h)	133	25,876	108	11.4%	201	197
MS Revocations	23	2,638	8	0.8%	35	71
PC3056 revocations	63	2,665	17	1.8%	93	44
PC3454	74	526	2	0.2%	174	7
PC3455	62	3,488	21	2.2%	72	75
Total AB109	355	35,193	156	16.5%	575	92

AB109 In-Custody Monthly–June 2016

PC 1170(h): 21 cases

	This Month (Jun 2016)		Last Month (May 2016)		This Year Total (Oct '15-Sep '16)		Annual (Oct '14-Sep '15)
Number of new PC1170(h) cases	21		16		154		201 per year
	Straight	Split	Straight	Split	Straight	Split	
	8	13	4	12	55	99	
* Average Length of Stay (ALOS) for PC1170(h) cases	216		169		198		197 days ALOS
	Straight	Split	Straight	Split	Straight	Split	
	201	226	177	166	184	205	
Non-PC1170(h) sentenced cases	160		124		1,347		1713 per year
* Average Length of Stay (ALOS) Non-PC1170(h)	44		44		44		43 days ALOS

**ALOS is determined after credits are applied*

Breakdown of PC1170(h) Sentences: 16 were men, 5 were women

Mandatory Supervision Revocation: 7 cases

	This Month (Jun 2016)	Last Month (May 2016)	This Year Total (Oct '15-Sep '16)	Annual (Oct '14-Sep '15)
Number of Mandatory Supervision Revoc. cases	7	1	30	35 per year
Average Length of Stay	67	143	104	71 ALOS

**1st MS case appeared in December 2012*

Post-Release Community Supervision: 23 cases

There were a total of 23 new local PRCS bookings in June; 6 were booked on a Flash Incarceration (PC3454) and were in custody during the month a total of 42 days or 7 days on average.

17 inmates were booked on a local PRCS revocation (PC3455). PRCS inmates were in custody a total of 878 days this month.

Parole Revocation: 8 cases

There were 8 parole revocation hearings in June. 8 inmates were given revocation sentences and are expected to serve a total of 344 revocation days in custody, or an average of 43 days each.

AB109 Totals

AB109 Stats	Current Year (Oct '15-Sep '16)				Prior Year (Oct '14-Sep '15)	
	Cases Since 10/1/15	Days in Custody	In Custody 6/30/16	% of Population 6/30/16	No. of Cases	Avg. Length of Stay
PC1170(h)	154	30,422	116	12.0%	201	197
MS Revocations	30	3,104	11	1.1%	35	71
PC3056 revocations	71	3,009	16	1.6%	93	44
PC3454	80	568	0	0.0%	174	7
PC3455	79	4,324	29	3.0%	72	75
Total AB109	414	41,427	172	17.7%	575	92



San Mateo County Quarterly Realignment Bulletin



Quarter 2: April-June 2016

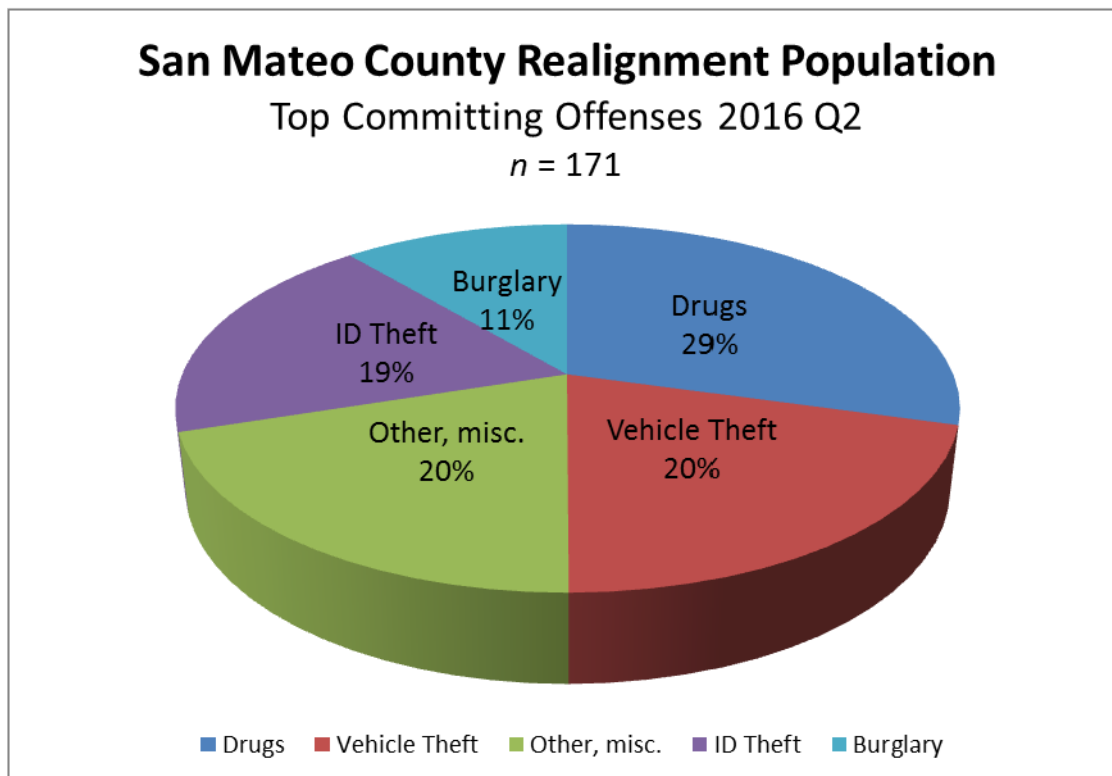
September 2, 2016

Executive Summary:

Offenses committed by the supervised and in-custody realignment populations in San Mateo County during April-June 2016 (Q2) continue to show that this population commits drug and property crime offenses. There is no significant involvement in serious or violent crime.

Overview:

Analysis of the offenses committed by active realignment offenders (both supervised and in-custody) in Q2 revealed that the top 3 committing offenses were drug offenses, vehicle theft, and other/miscellaneous offenses that include burglary, vehicle code offenses, sex offenses, and assaults. This report will examine how the top offenses committed by the realignment population correlate to overall crime trends in San Mateo County. Specifically, this report examines **vehicle theft** in San Mateo County for 2016 Q2. *The data used for this analysis was derived from Uniform Crime Reports (UCR) which were provided by each San Mateo County law enforcement agency, and from information provided by the San Mateo County Probation Department.*



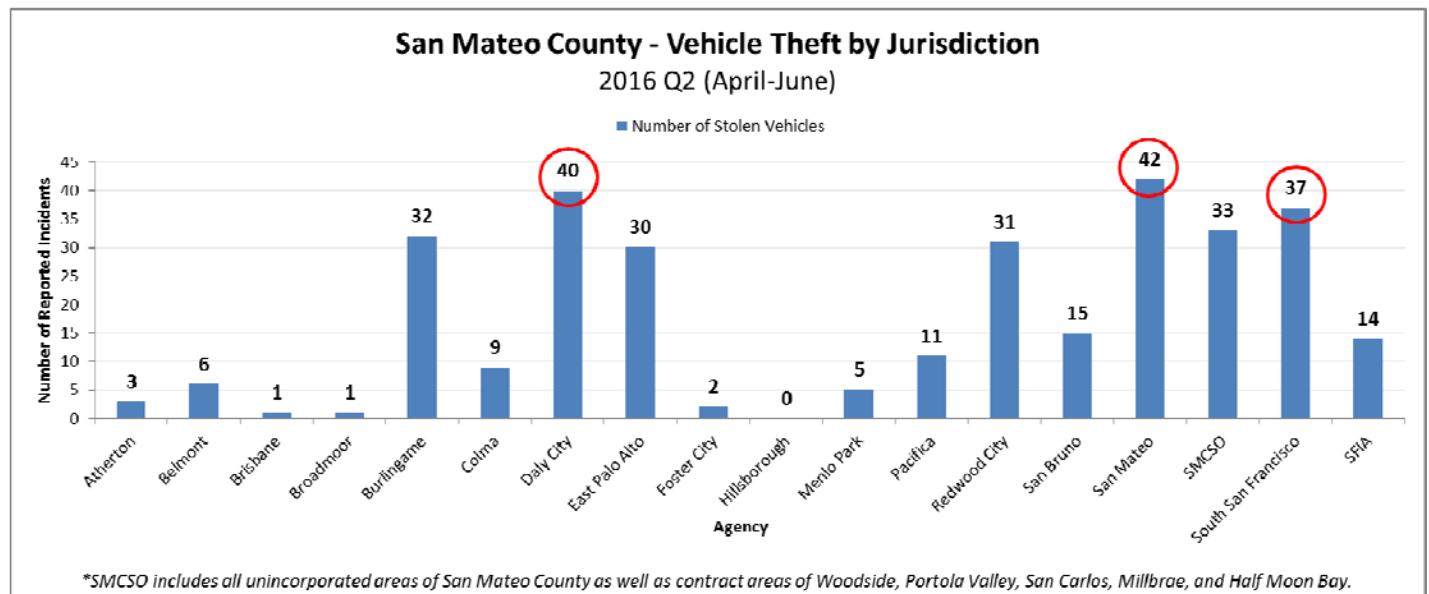
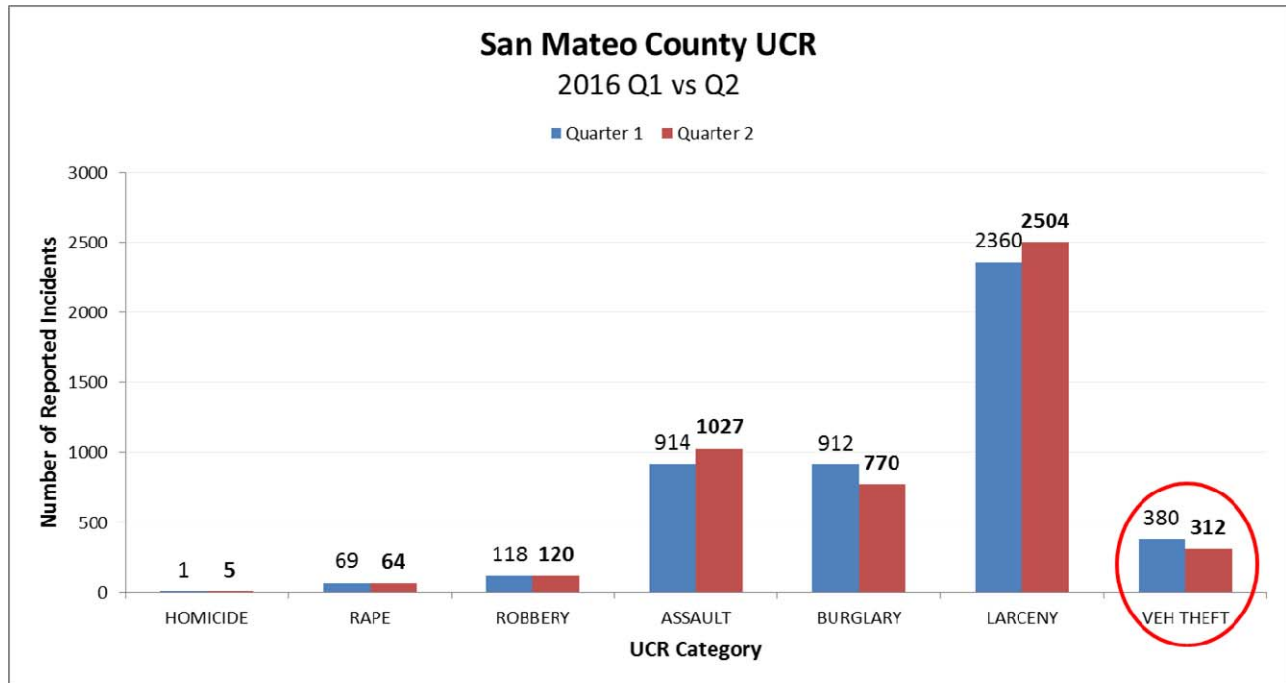
Note: Although the reader may be inclined to correlate the top realignment offenses with actual crime trends, please be advised that the realignment population is a small population compared to the overall offender population in and out of custody.

Breakdown of Vehicle Theft

San Mateo County
2016 Q2 April-June

Analysis of reported vehicle thefts that occurred in San Mateo County between April-June 2016 revealed that most vehicle thefts occurred in San Mateo (42), Daly City (40), and South San Francisco (37).

Overall, 312 vehicle thefts were reported in San Mateo County during this reporting period. Although vehicle theft is one of the top offenses committed by realignment offenders during this reporting period, it is not one of the highest reported crimes in San Mateo County. Countywide Vehicle Theft actually decreased by 18% in Q2 when compared to Q1. **Please note that although we are reporting "committing offense" for this reporting period, the actual offense may not have occurred during this quarter.*

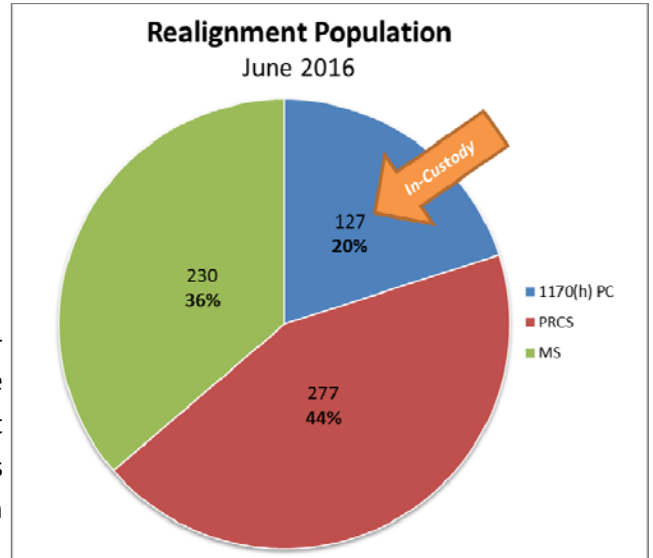


*SMCSO includes all unincorporated areas of San Mateo County as well as contract areas of Woodside, Portola Valley, San Carlos, Millbrae, and Half Moon Bay.

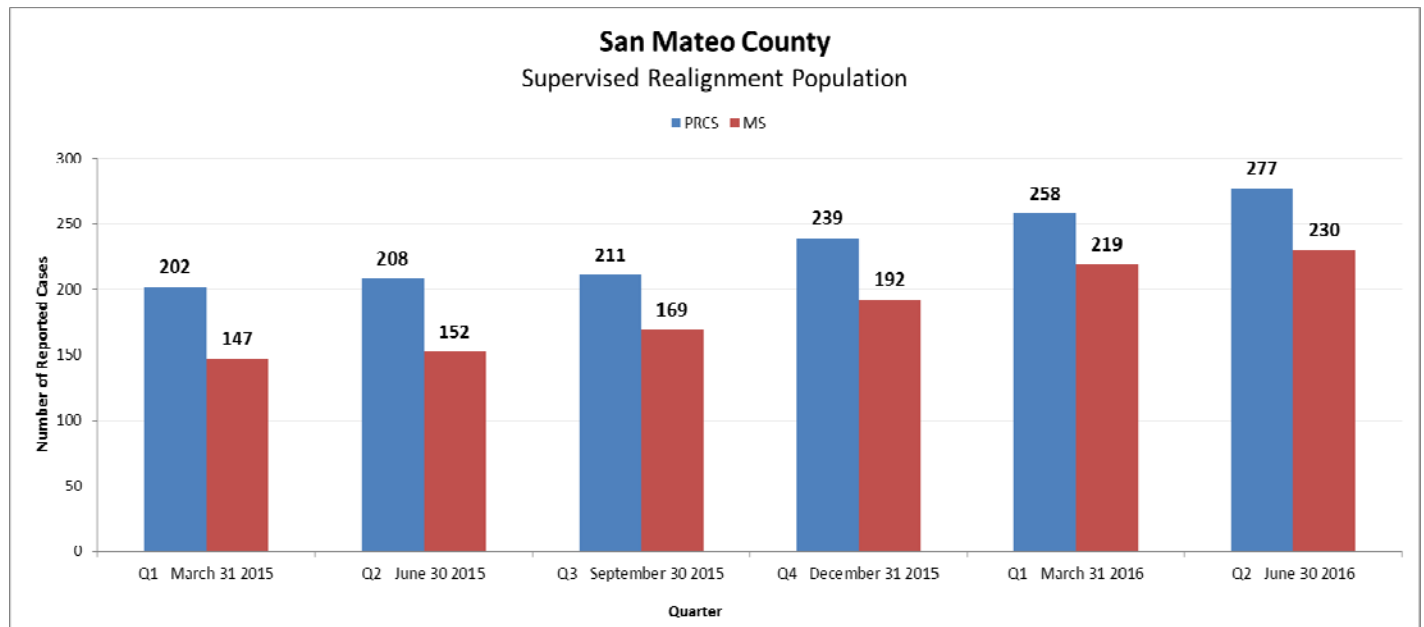
AB109: San Mateo County

As of June 30, 2016, the entire realignment population in San Mateo County—both in and out of custody—consisted of approximately 634 offenders. The supervised realignment population in San Mateo County was made up of 277 subjects on Post Release Community Supervision (PRCS) and 230 subjects on Mandatory Supervision. The in-custody (1170(h) PC) population consisted of 127 offenders.

The PRCS population increased by 7% and the Mandatory Supervision population increased by 5% since Q1 2016. Over the course of the last year and a half, the supervised realignment population has continued to increase. The PRCS population has increased by 33% in the last year. The Mandatory Supervision population has increased by 51% in the last year.



During the Quarter 2 reporting period, the Probation Department received approximately 55 new cases. Of these, most cases were for drug related offenses (13), followed by vehicle theft (9), and other miscellaneous offenses: fire-arms, vandalism, and obstruct/resist officer (33).

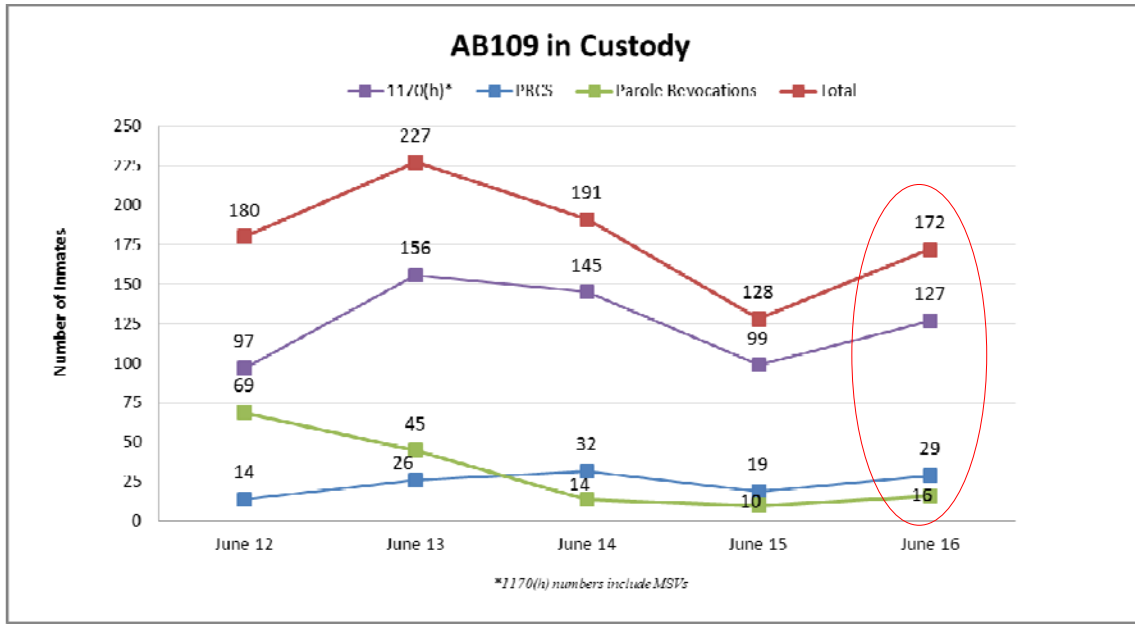


Note: It is possible that there are a small number of offenders that may have been double counted depending on their in-custody or out-of-custody status at the time these numbers were generated. This data was obtained from different sources (probation, jail) and therefore may overlap slightly. However the preceding analysis provides a general picture of the San Mateo County realignment population.

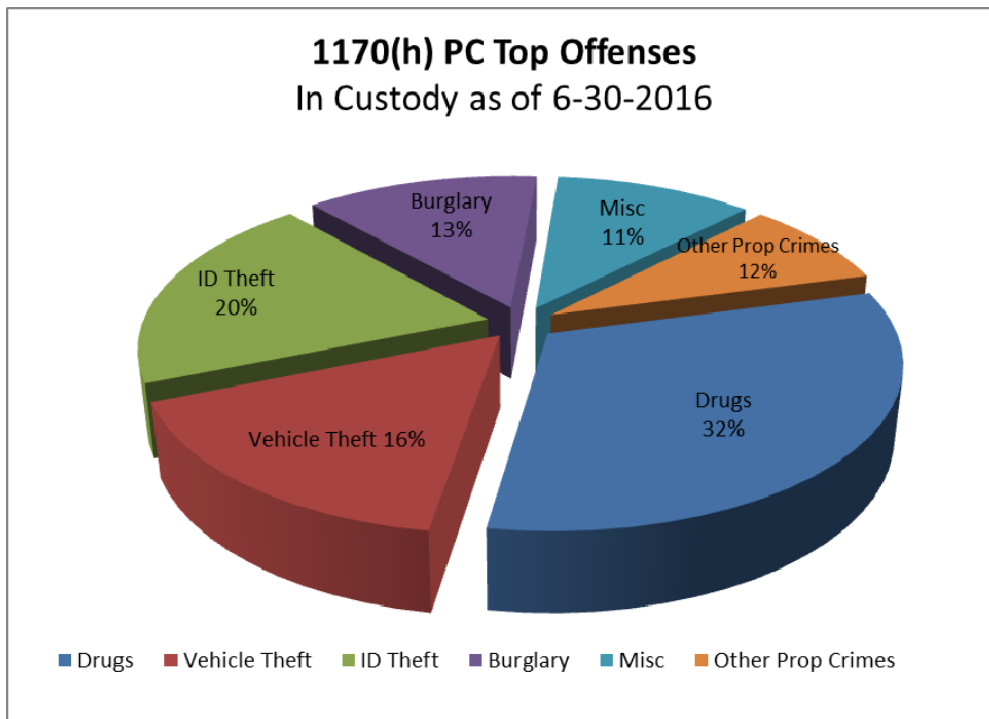
San Mateo County: *In Custody*

Maguire Correctional Facility:

AB109 In-Custody: Public Safety Realignment has been in place for about four and a half years. A comparison of the AB109 In-Custody population at the end of Q2 each year reflects an increase in the population within the last year. It is unknown what is causing this increase, however, the increase could be attributed to the stabilization of criminal proceedings following the implementation of Prop 47 in November 2014.



1170(h) PC Population: Analysis of the offenses committed by the 1170(h) PC population in custody on June 30, 2016, **servicing their original sentences**, revealed that the top four committing offenses included drug offenses, identity theft, vehicle theft, and burglary. These offenses are consistent with the top five offenses committed by the overall realignment population.



Conclusion:

Analysis of UCR data for 2016 Q2 shows that San Mateo County crime was driven by Larceny, Assaults, and Burglary; which is consistent with 2016 Q1.

Vehicle Theft represents 20% of offenses committed by the realignment population. This number is up from 16% in Q1. However, vehicle theft represents only 6% of all countywide crime data in Q2, which is down from 8% in Q1.

Identity Theft and related offenses, such as fraud, continue to be one of the top offenses committed by the realignment population (19%, up from 13% in Q1). Identity Theft, along with other property crimes, is categorized under Larceny in UCR. Larceny is the top offense committed in San Mateo County during 2016 Q2 (52% of all offenses committed). Larceny was also the top offense committed in all of 2014 and 2015.

Drug Offenses continue to be the top offenses committed by realignment offenders (29%, down from 38% in Q1). Drug offenses are not a UCR category and were not included in the UCR crime data analysis for this report.

As was the intent of AB109, members of the realignment population commit non-violent, non-serious, and non-sex offenses. There are few examples of realignment offenders engaging in violent crime, however, this analysis reflects that most San Mateo County realignment offenders are involved in drug offenses and property crime offenses. ***It is important to keep in mind that the realignment population is a small population compared to the overall offender population in San Mateo County and therefore, we cannot confidently attribute countywide crime trends to this population.***

Further analysis is still needed to determine if Prop 47 is responsible for the increase in property crime in San Mateo County. The NCRIC will continue to monitor and analyze crime data to identify specific crime trends, the effects of Prop 47, and the relationship this may have to the realignment population in San Mateo County.

Intelligence Gaps:

- What is the recidivism rate of **active** realignment offenders in San Mateo County?
- What is the recidivism rate of **terminated** realignment offenders in San Mateo County?
- How is Proposition 47 affecting the realignment population in San Mateo County?
- Where are realignment offenders committing new crimes?

Service Connect HSA Dashboard

FY 15-16, Q4 (April 2016 – June 2016)

New Intakes

- A total of 77 new intakes in the last quarter of the fiscal year which is the 3rd highest count of new intakes during the year. The 2nd quarter has the highest with 111 total intakes.
- Total intakes for the Fiscal Year reached 341.
- From a total intake of 12 Parolees during the year, 7 remained active as of the 4th quarter.

Eligibility/Benefits

- There were 35 CalFresh, 21 General Assistance, and 11 Medi-Cal applications received and processed during the last quarter for a total of 67 applications.
- There were 32 CalFresh, 13 Medical, and 0 General applications approved for a total of 45 approvals during the quarter. Some clients availed of the job opportunity offered under the 550 Jobs Program in lieu of receiving General Assistance.

Employment Services

- Of the total 89 clients who obtained employment in the 4th quarter of the fiscal year, unsubsidized community employment accounted for 62%.
- Subsidized employment provided at 550 Jobs is 36%, and 2% offsite placement.
- Fourth quarter had the highest placements during the year. It is 11% higher than the 3rd quarter.
- The top three career paths for our clients throughout the fiscal year were in the fields of construction, retail, and food services. Automotive services, maintenance of all types, and transportation services were the other employment areas our clients primarily obtained employment.

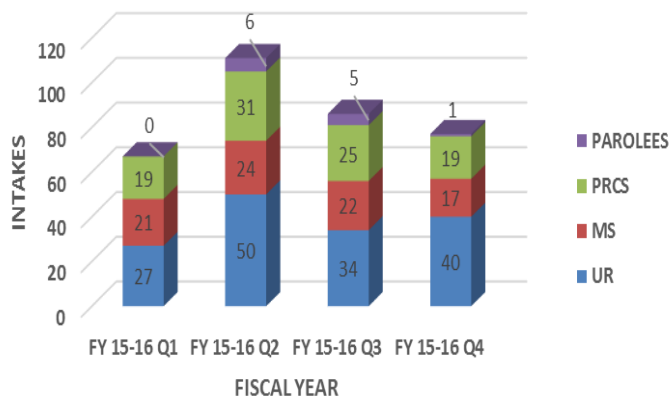
Services Provided

- 56 clients received 386 motel nights during the 4th quarter, while 10 clients received 392 shelter bed nights for a total of 66 clients who used shelter services.
- For transportation service, there were 1104 single bus tickets received by 128 clients and 185 monthly bus passes received by 173 clients.
- A total of 142 clients received food assistance; 96 gift cards and 57 food totes.

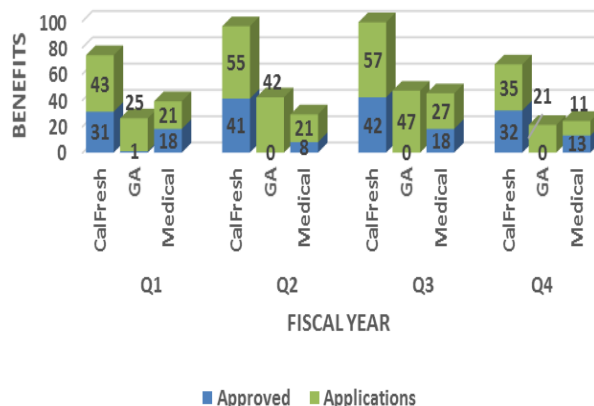
Peer Support/Groups

- There were 9 support group meetings held during the 4th quarter with an average of 5 attendees per meeting.
- A total of 8 clients received peer mentoring services.
- There were 53 face-to-face contacts between clients and mentors accounting for 67% of total services delivered.
- Mentors provided transportation to clients 19 times during the quarter.

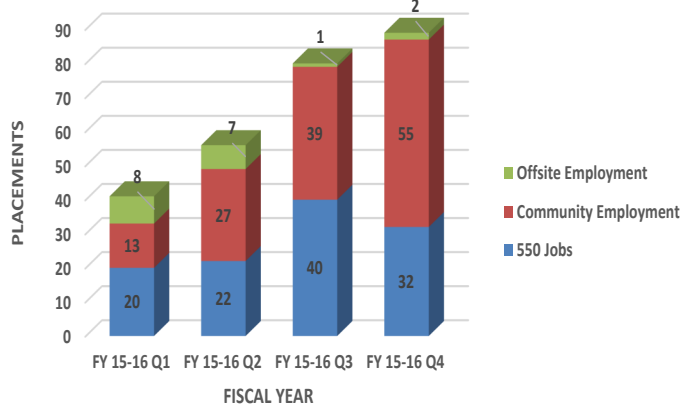
NEW INTAKES BY QUARTER
FY 2015-16



BENEFITS BY QUARTER
FY 2015-16



JOB PLACEMENTS
FY 2015-16

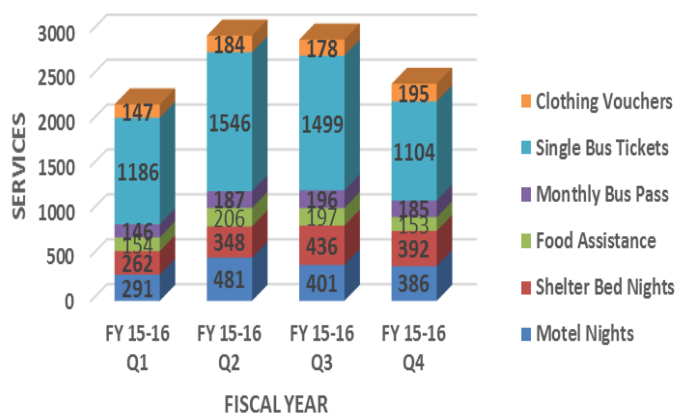


COMMUNITY EMPLOYMENT by TYPE of BUSINESS
4TH QUARTER, FY 15-16

Construction	11
Retail	10
Food services	8
Auto, Landscaping, Electrical Services	4
Janitorial Maintenance	3
Sales	2
Transportation/Towing	2
Warehousing; Shipping & Handling	2
Non-profit	2
Health; Fitness; Recreation	2
Miscellaneous	9
TOTAL	55

AVERAGE WAGE : \$14.28 / hour

SERVICES PROVIDED
FY 2015-16



PEER SUPPORT/GROUPS-4TH QTR. FY 15-16

Support Group Meetings Held	9
Clients Served by Peer Mentors	8

BHRS Service Connect Dashboard

FISCAL YEAR 2015-2016 Q4

At-A-Glance: All Time BHRS Referred/Served/Number of Services

Total Referred = 1549

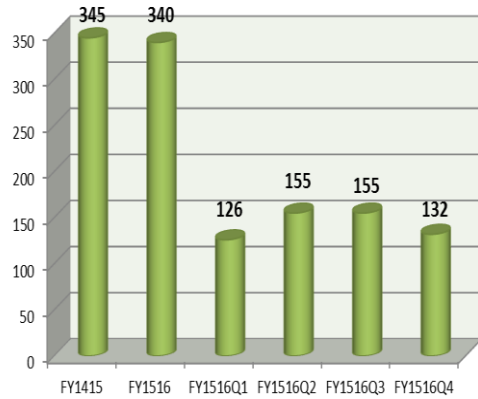
Total Served = 779

Total Services = 7174

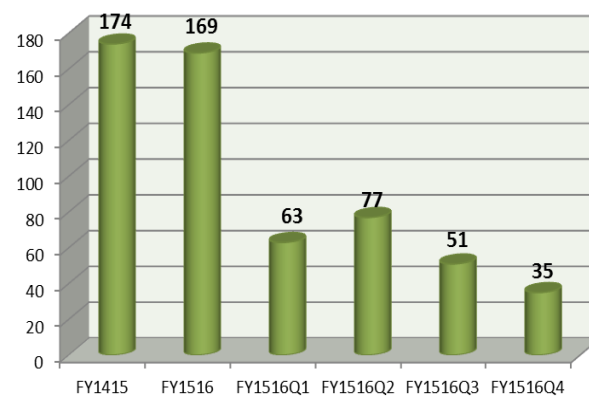
Top SUD Diagnosis: Unspecified amphetamine or other stimula
Top MH Diagnosis: Unspecified schizophrenia spectrum

ATTACHMENT D

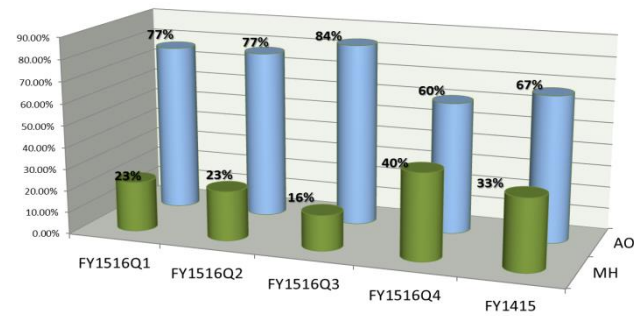
Open Cases w/ a Service



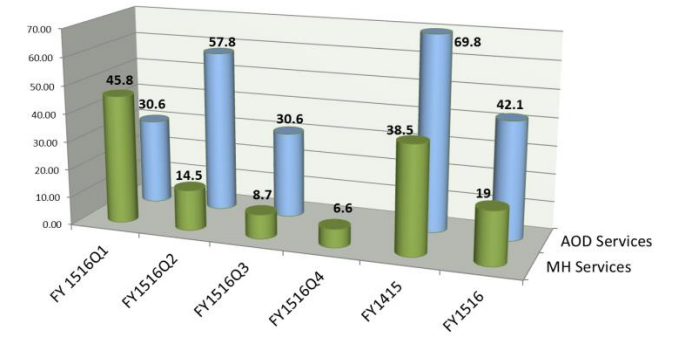
Engaged Participants (≥4 Services)



Clients by Treatment Plan Type

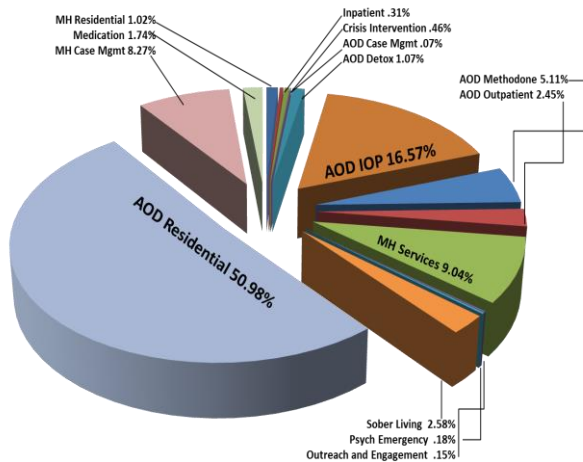


Average Days in Treatment

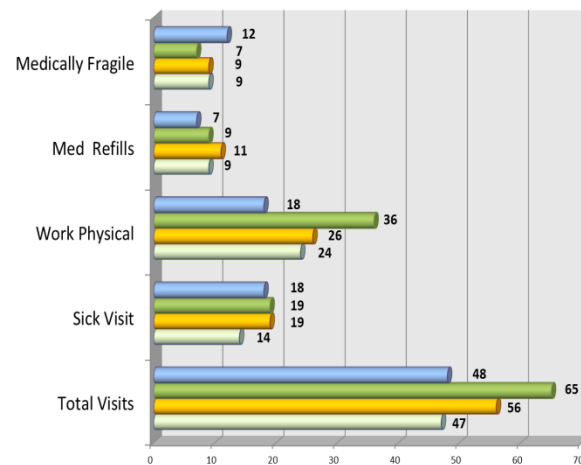


Services Provided by Service Connect Treatment Partners:

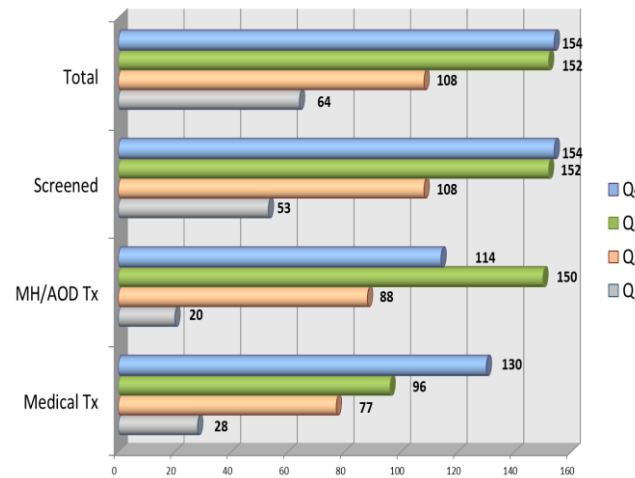
MH/AOD Services



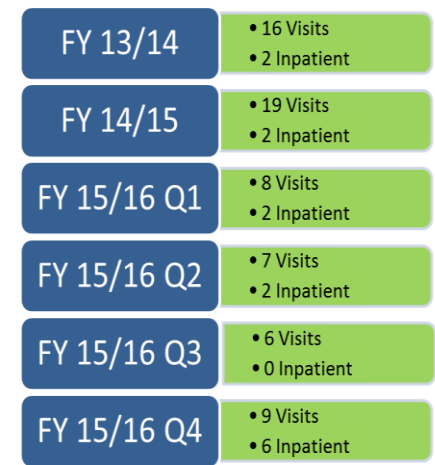
Mobile Health Van Services



Correctional Health Services



PES Services



AT-A-GLANCE: All Time Total BHRS Referred, Served, Number of Services, or Booking Encounter

The total number of participants referred to BHRS for treatment since the inception of the Service Connect is 1,549 and of these, 779 entered into treatment and/or recovery plans (these participants were served by BHRS and is a lower number because not all assessments result in treatment). Referred is defined as participants showing up for the first post-referral appointment and does not include those referred, but who did not follow through on the referral. This graphic also represents the total number of services (both mental health and substance use treatment) provided to participants between FY12/13 and the fourth quarter of FY 15/16. Service type detail for the fourth quarter is presented in the pie chart at the bottom of the dashboard. The number of services has generally grown as compared to previous years.

Service Connect Cases with a Service

This graph represents total Service Connect participants that received at least one BHRS service. The numbers do include participants that continued from year to year, so a participant could be counted more than once in each year if their case was open across multiple fiscal years. Therefore, this graph indicates the total open cases from the previous year for reference, the total open cases as of September, and the newly open cases for four quarters of this fiscal year. Significant to historical growth was trending for FY 15/16 because the number of new participants in the first quarter exceeds the annual growth rate of new participants for all previous fiscal years and this dramatic growth rate continues.

Percent of Participants with Substance Abuse Recovery Plan or a Mental Health Treatment Plan

This graph presents what percentage of Service Connect participants who had a mental health treatment plan or a substance abuse recovery plan. Recovery plans are typically at a rate of two to one as compared to a mental health treatment plan. However, trends in the fourth quarter show to have a growth in mental health services, the highest of all quarters this 2015/16 fiscal year. It should be noted that co-occurring participants are not represented.

Engaged Participants with Four or More Services in a Year

“Engaged” is defined as a participant that has received four or more services. This means that the participant has returned to BHRS for multiple appointments regarding different services, which demonstrates that the participant is engaged in treatment because they actively participate. The current report generally reflects significant engagement and a dip in the Q4 due to the previously mentioned staff on leave.

Average Days in Treatment

This new graph replaces the “Progress & Impact on Recidivism” graph from previous reports. The new graph presents the average number of days that a participant is in treatment for an AOD or mental health plan. The new graph is incomplete as fourth quarter AOD data is not fully available. There is significant variation in the total average days between FY14/15 and FY15/16 due primarily to staffing. A position has been on extended leave and filling a vacancy was notably delayed.

Mental Health and Alcohol & Other Drugs Services Provided by Service Connect

This pie chart reports mental health and substance abuse treatment services provided by BHRS to Service Connect participants for the fourth quarter. The top five services utilized in order are: Alcohol and Drugs Residential, Alcohol and Other Drugs Intensive Outpatient, Mental Health Services, Mental Health Case Management, and Alcohol and Other Drugs Methadone services.

Mobile Health Van Services

This graph shows data for all four quarters for Mobile Health. Notable changes for the fourth quarter are a decrease in the total number of visits and work related physicals and a increase in medically fragile cases.

Correctional Health Services

Correctional Health data presents the total participants that flow through Correctional Health in each quarter, the number of participants screened, the number treated medically, for mental illness, and for substance abuse. Correctional Health has experienced large growth across the all four quarters.

Service Connect Cases with PES Counts

A Psychiatric Emergency Services (PES) count is when a Service Connect participant has presented themselves at PES. Those participants that were not admitted are shown as a “visit” and those admitted are shown as “inpatient.” Involvement with PES is only counted if enrolled in Service Connect, counts do not include episodes when subject was not a participant in Service Connect (the Q1 report did count such episodes). Visits have generally remained steady.