

CALLING ALL STUDENTS GRADES 6-12!

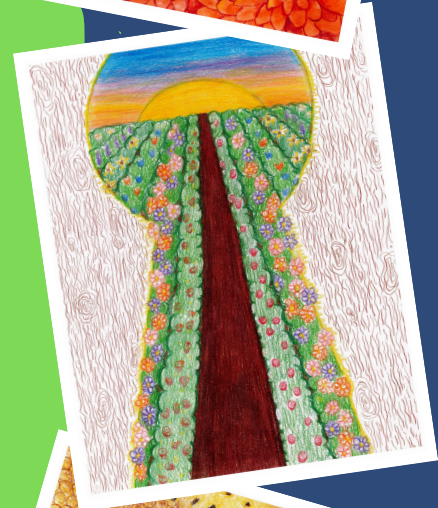
San Mateo County Crop Report Art Contest



GRAND PRIZE:
FRONT COVER
PLUS \$500

2ND PLACE:
\$300

3RD PLACE:
\$200



<https://bit.ly/3OKgWtr>

AGRICULTURE / WEIGHTS & MEASURES



**COUNTY OF
SAN MATEO**



SAN MATEO
COUNTY
ARTS
COMMISSION

San Mateo County Crop Report Art Contest

Overview: An art contest highlighting San Mateo County agriculture. Entries must feature one or more crops from the following list on your cover art: pumpkins, brussels sprouts, cut flowers, and/or potted plants.

Additional commodities can also be included in the artwork if they are produced in San Mateo County, including: fruits and vegetables, livestock, Christmas trees, and field crops. Please see the 2023 San Mateo County Crop Report on our website (agwm.smcgov.org) for a more comprehensive list. Farmworkers may also be included.

Eligibility: Any Middle or High School Student (6th through 12th grade) who resides within San Mateo County.

Rules:

- All entries must be submitted with a completed registration form.
- All submissions must be in the following dimensions: Portrait (11 in Height x 8.5 in Width)
- Entries are limited to painting/drawing mediums such as: paint, colored pencil, gouache, pastel, watercolor, etc. Other mediums such as photography, digital art, or 3D art are not eligible for this contest.
- Entries should utilize brighter colors as lighter colors do not reproduce well.
- Art pieces must be easily transportable for judging.
- Fragile artwork may be subject to damage while being transported.
- Entries must feature one or more crops from the following list on your cover art: pumpkins, brussels sprouts, cut flowers, and/or potted plants.
- Entries must be representative of agriculture and crop production in San Mateo County.
- Entries must be original works and not have been published prior to entry in this contest.
- The back of each artwork must include: student's name, teacher's name, school, phone, and email address.
- Do not incorporate headings and titles into the artwork.
- Items not allowed: alcoholic beverages and vessels, commercial signs, labels, logos, etc.
- Artwork will be returned to students upon publication of the Crop Report.

Entry Deadline:

All entries* must be received by the San Mateo County Agricultural Commissioner's Office (728 Heller St., Redwood City or 785 Main Street, Suite C, Half Moon Bay) by: 5:00 pm, Friday, March 28th, 2025. For more information, call (650) 363-4700 or email mjwong@smcgov.org.

*All entries submitted will be returned; however, the San Mateo County Agricultural Commissioner's Office may use any and all submissions for future publication without prior permission.

"DISCLAIMER: This activity is not a school-sponsored, or district sponsored activity."

All entries are due by 5:00pm, March 28th, 2025.

For more information, call (650) 363-4700

or e-mail mjwong@smcgov.org

AGRICULTURE / WEIGHTS & MEASURES



**COUNTY OF
SAN MATEO**



SAN MATEO
COUNTY
ARTS
COMMISSION