

# San Mateo County

## Off-leash Dog Pilot Program Data Summary: Monitoring Period 4 (March 2022 – April 2022) *Baseline Data Collection*

### I. Data Results

**Table 1.** Overall Dog Monitoring Results at Quarry Park, as measured from March 2022 to April 2022.

	Standards	Quarry Park
Presence of dog waste <sup>1</sup>	No more than 20 occurrences in one month per park	25 instances per month
Harassment of wildlife	Dogs observed chasing or harassing wildlife two times over a 60-day period	0 instances
Dog entry to sensitive areas	No dogs observed entering Parks defined and signed sensitive areas	0 instances
Dogs traveling off-trail	Dogs observed traveling at 10 feet or more off trail	0 instances
Leash compliance for on-leash trails <sup>2</sup>	70% of parties with dogs will have their dogs on a leash when using an on-leash trail	71.4% leash compliance
Interactions with dogs and visitors	Any dog is observed exhibiting unwelcome behavior(s) to other dogs or visitors 10 times per month per park	1 instance

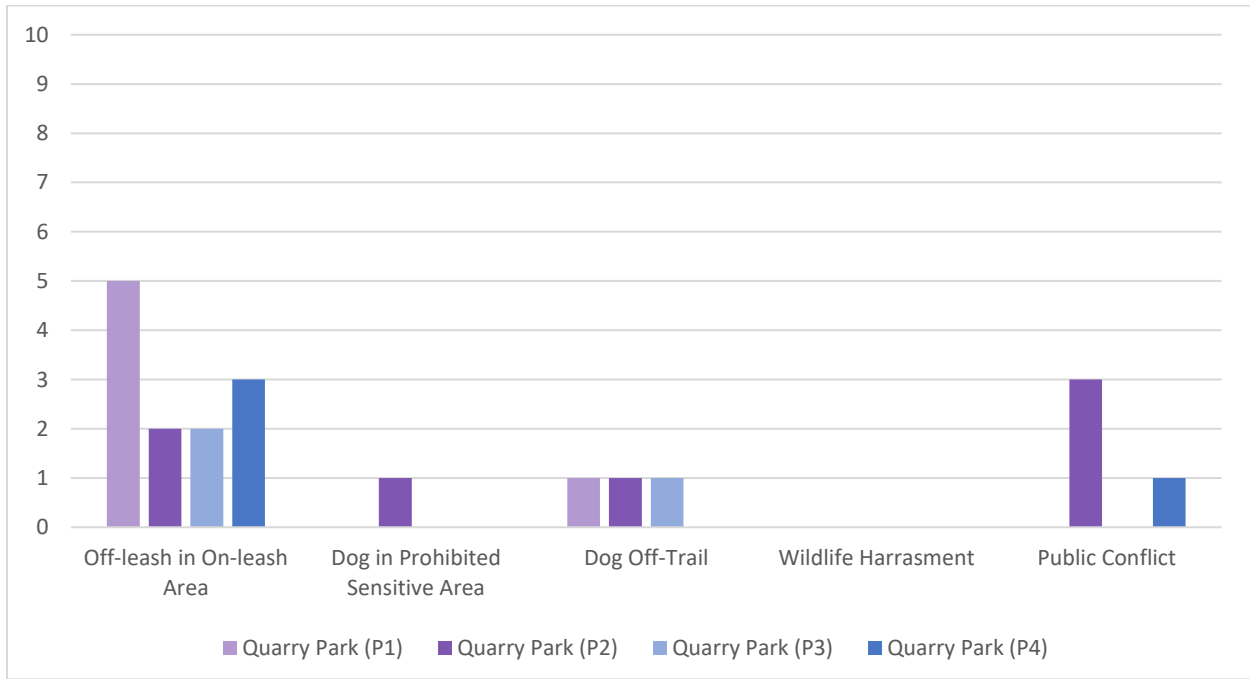
<sup>1</sup> “Per month” data for this row was calculated by averaging the total observations for each month indicated in table 2.

<sup>2</sup> Leash compliance data was calculated as the average percentage of “on-leash dogs in on-leash trails” out of “all dogs in on-leash trails” for the monitoring period.

**Graph 1.** Dog Monitoring Results (excluding “Presence of Dog Waste”) at Quarry Park, as measured from March 2022 to April 2022.



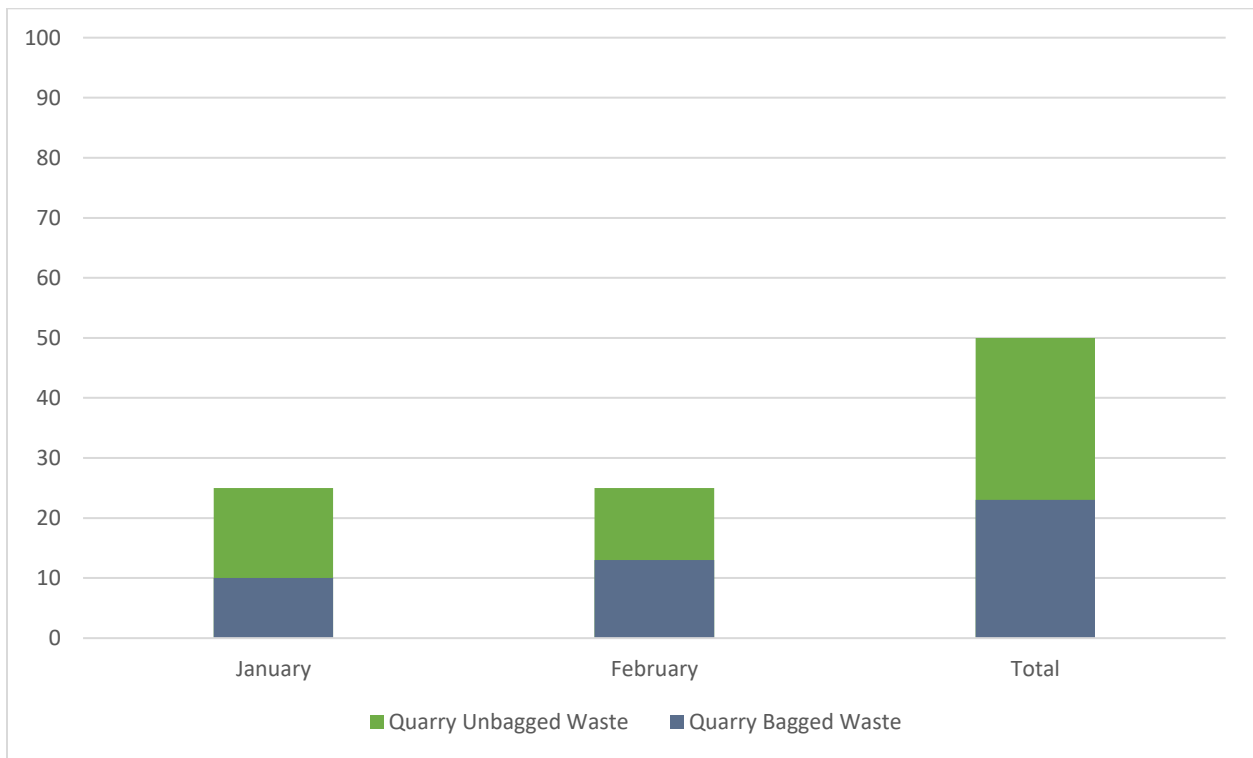
**Graph 2.** Change in Dog Monitoring Results (excluding “Presence of Dog Waste”) at Quarry Park between Monitoring Period 1, Monitoring Period 2, Monitoring Period 3, and Monitoring Period 4.



**Table 2.** Monthly Dog Monitoring Results for “Presence of Dog Waste” and “Interactions with Dogs and Visitors” at Quarry Park, as measured from March 2022 to April 2022.

		March	April	Total
Quarry Park	Presence of Dog Waste	25 instances	25 instances	50 instances
	Interactions with Dogs and Visitors	0 instances	1 instance	1 instance

**Graph 3.** Dog Waste Comparison at Quarry Park, as measured from March 2022 to April 2022.



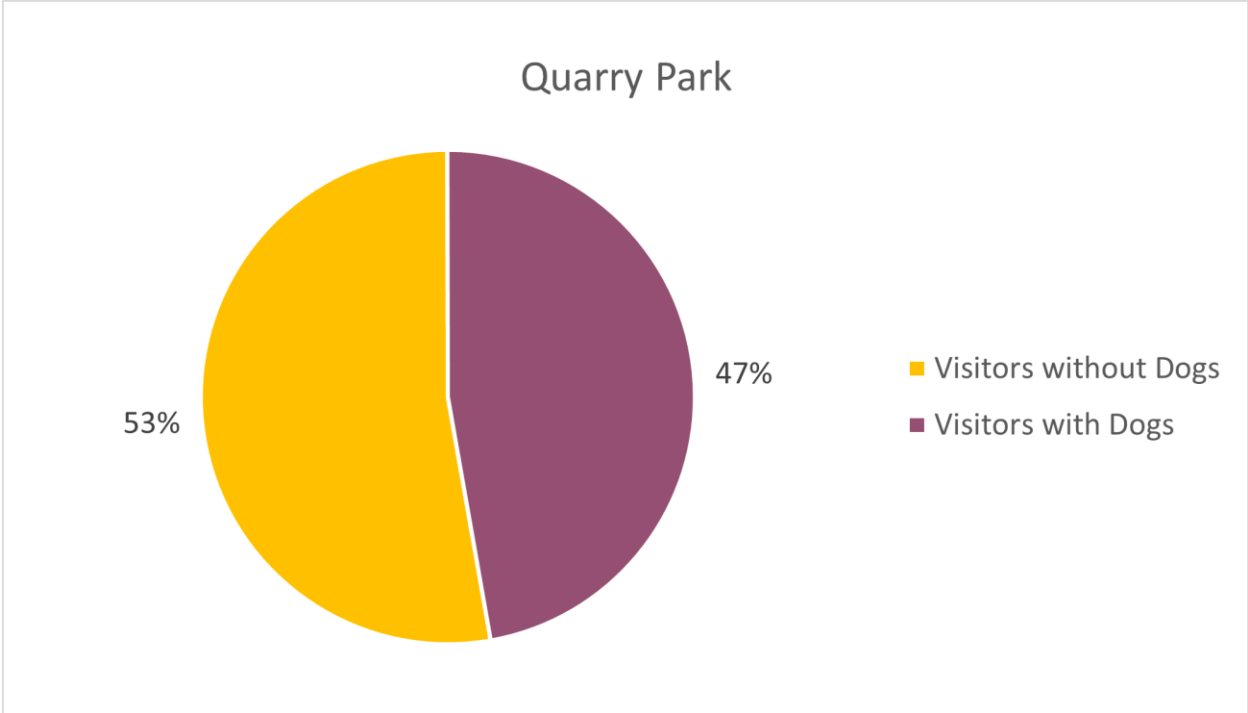
**Table 2.** Visitor Demographics at Quarry Park, as measured from March 2022 to April 2022.

	Quarry Park	
Total visitors overall	601	
	Total	% of visitors overall
Visitors without dogs	317	52.7%
Visitors with dogs	284	47.3%

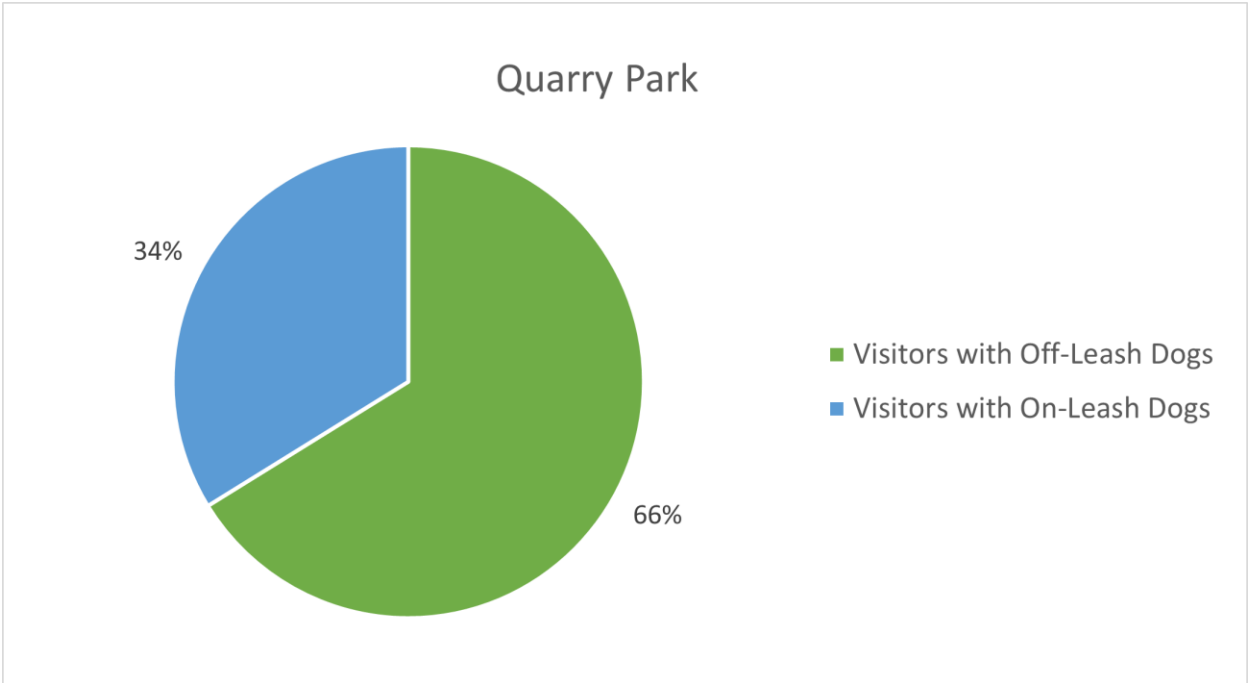
**Table 3.** Demographics of Visitors with Dogs at Pillar Point Bluff and Quarry Park, as measured from March 2022 to April 2022.

	Quarry Park	
Total visitors with dogs	284	
	Total	% of visitors with dogs
Visitors with off-leash dogs	188	66.2%
Visitors with on-leash dogs	96	33.8%

**Graph 4.** Percentage of Visitors with or without Dogs out of Total Visitors at Quarry Park, as measured from March 2022 to April 2022.

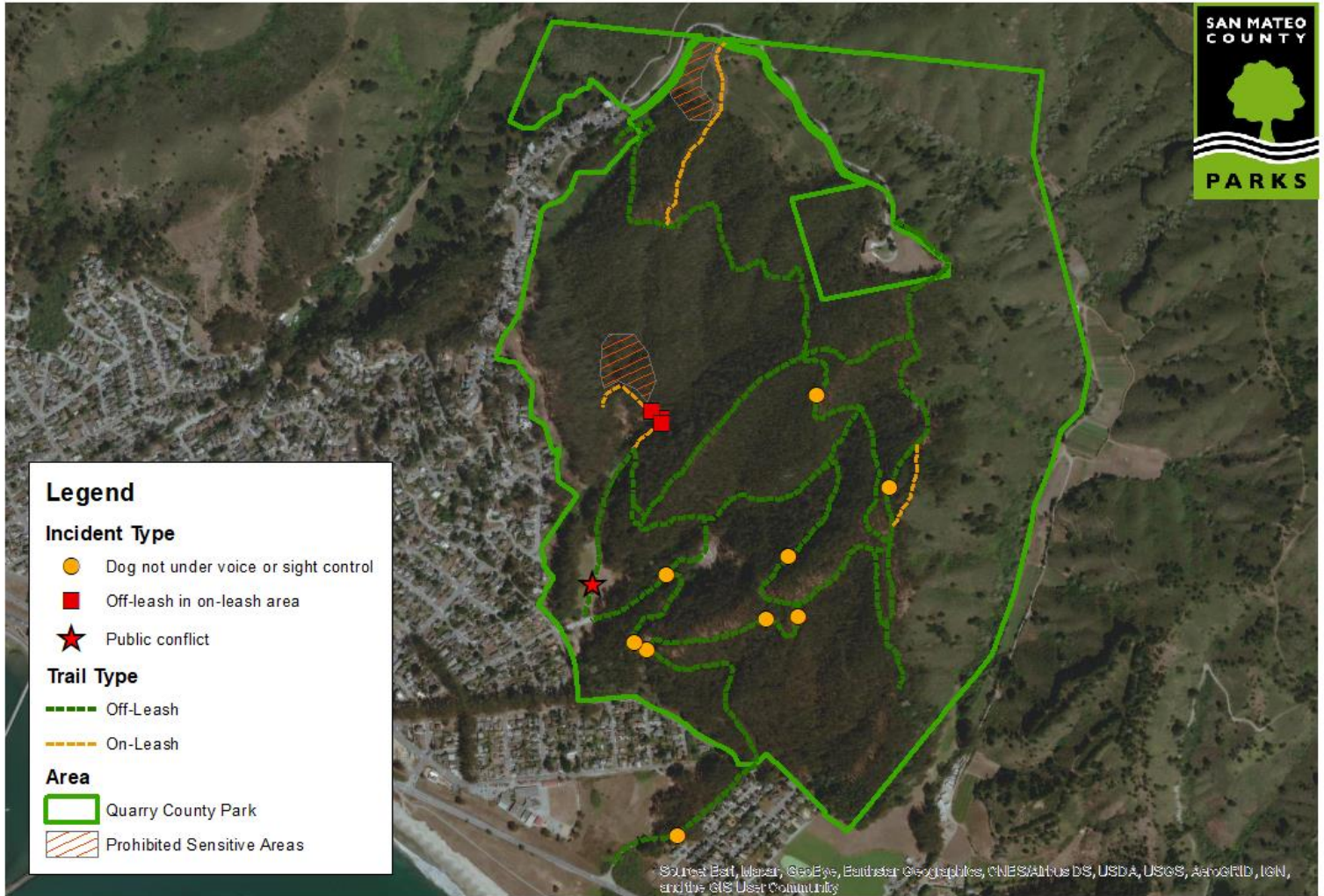


**Graph 5.** Percentage of Visitors with Off-Leash or On-Leash Dogs out of Visitors with Dogs at Quarry Park, as measured from March 2022 to April 2022.



## II. Maps

**Map 1.** Dog Monitoring Criteria (excluding “Presence of Dog Waste”) at Quarry Park, as measured from January 2022 to February 2022.

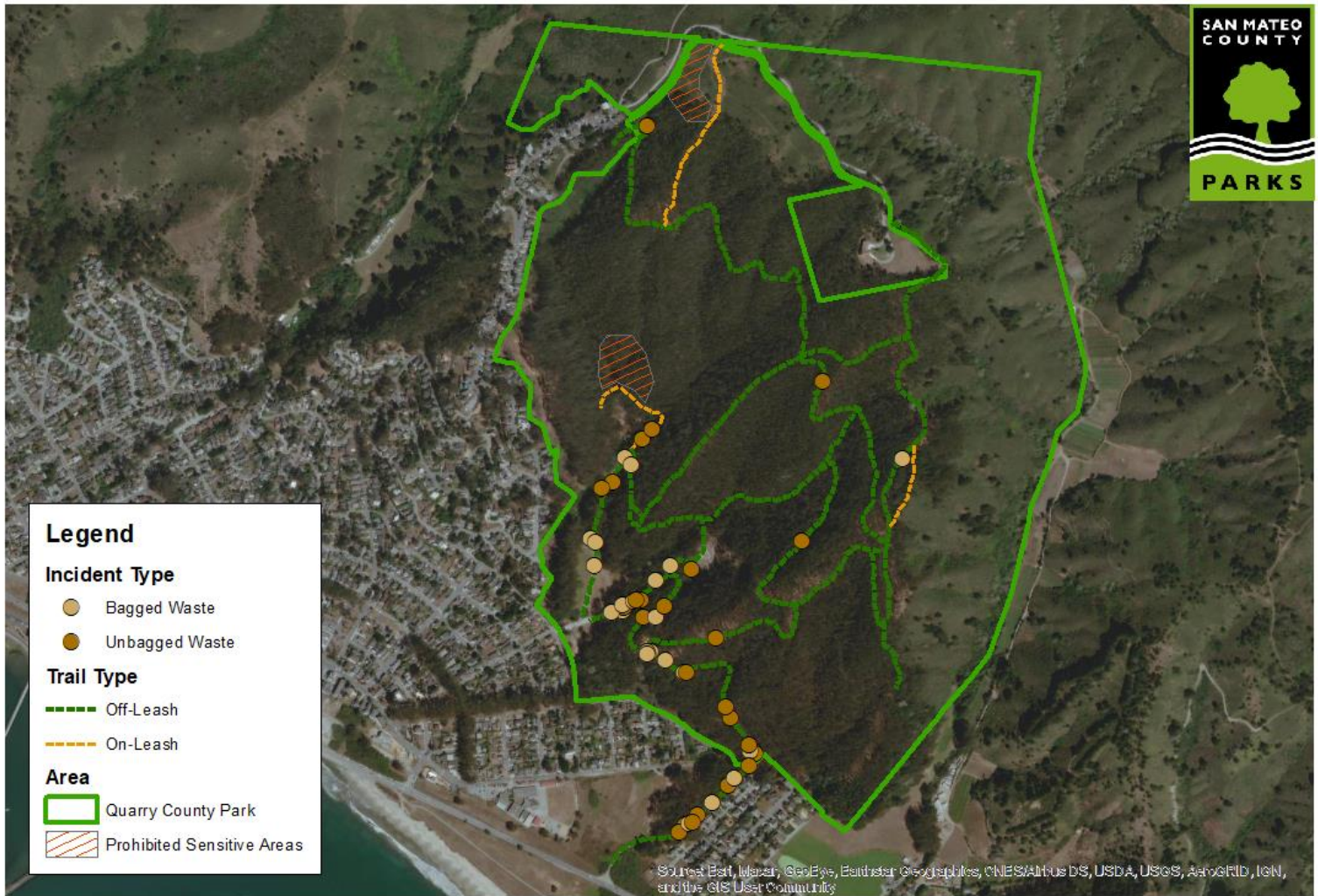


### Dog Recreation Incidents: Quarry Park

0 0.25 0.5 Kilometers



**Map 2.** Dog Waste Observations at Quarry Park, as measured from January 2022 to February 2022.



**Dog Recreation Incidents:  
Quarry Park**

**III. Summary of Results**

There were 25 instances of dog waste not being picked up in March and in April, exceeding the adopted standards by five pieces per month. Further, when compared to Monitoring Period 3, there was an increase from no public conflicts to one public conflict between an off-leash dog and park patron. Harassment of wildlife and entry into prohibited sensitive areas were not observed during this monitoring period. Instances of dogs traveling off-trail decreased from one to zero, and leash compliance also decreasing from 83% to 71.4%.

In terms of visitor demographics, 601 total visitors were observed during Monitoring Period 4, with 47.3% of visitors bringing dogs and 52.7% visiting without dogs. Sixty-seven percent of visitors with dogs let their dogs off-leash, while 32.6% kept them on-leash. Compared to Monitoring Period 3, there was an increase in observed visitors from 561 to 601. The number of visitors without dogs decreased from 334 to 317, while the number of visitors with dogs increased from 227 to 284.