

# UPDATED LANDSCAPE PLAN

MAY 2022

# REALIZE FLOOD PARK



cmg





# WHAT WE'VE HEARD FROM THE COMMUNITY

Over the past four months, the San Mateo County Parks Department and the design team have hosted a series of workshops, community events, and working group meetings as well as opened an online public survey to gather input on the 2020 Flood Park Landscape Plan and inform its refinement. Almost 800 people responded to the online survey, and several hundred provided feedback during the first Realize Flood Park workshop (2/2/22) and subsequent community events at Casa Circulo Cultural in North Fair Oaks (3/12/22) and a Movie Night at the park (3/26/22). The design team compiled and analyzed the feedback received during community events and through the survey responses and synthesized the following key findings and themes.

- **Flood Park is a place to be in nature, exercise, and gather with friends and family:**

Most respondents are excited about increased opportunity for physical activity, connecting with nature and being with family and friends.

- **The trees of Flood Park are part of our heritage and our future:** Most respondents indicated that preservation of heritage trees and trees in the heart of the oak woodland is a priority. The trees that make Flood Park so special are a treasure to preserve and a resource to cultivate.

- **Flexible space for field sports is in high demand:** 46% of respondents indicated that they or their family would use the multi-use sport fields, of those 86% live in households with children. This represents significant demand for multi-use fields, especially among families with children .

- **Let's play - Soccer and Baseball:** Among those who want to use the sports fields, 61% are interested in soccer and 41% are interested in baseball. In addition, there is a clear desire for space to play frisbee (27%), football (18%) and lacrosse (17%). This suggests that flexibility for diverse athletic opportunities is important to the community.

- **I want to drop-in and play with my friends:** 63% of those who would use the sports fields indicated that they are interested in using the multi-use sport fields for drop-in play or informal play, which requires open and flexible field space.

- **The size and flexibility of fields is important:** Respondents indicated that various field sizes are desired suggesting that flexibility in field configuration and use is critical to meeting community needs.

- **Court sports and the pump track invite diversity:** 27% of survey respondents expressed an interest in using the tennis/pickleball courts. Approximately 20% of respondents are excited about using the basketball courts, sand volleyball courts, and the pump track. These facilities will ensure that the park meets the diverse and multi-generational interests of the community.

- **Flood Park should include spaces for people of all abilities to play:** 37% of survey respondents are excited about an all-abilities play space and 32% are excited about an adventure play area. Looking toward the future suggests the need for multi-generational play spaces that invite people of all-abilities and ages to play together.

- **Let's Picnic:** Over 80% of respondents indicated that they would use the picnic areas. Most respondents are interested in small to medium gatherings with 2 – 50 people. The revised landscape plan will preserve existing reservation and drop-in picnic site quantity and capacity.

- **Gardens can bring us together:** 28% of respondents expressed an interest in demonstration gardens. This suggests a strong link between stewardship and community that can become places of sharing and learning.

# UPDATES TO THE LANDSCAPE PLAN

The 2020 Landscape Plan has been revised based on the feedback that was received, and the key themes outlined above. A summary of the changes is included below.

**Park Program and Features** - Outreach and survey responses indicated strong support for each of the park programs and features established as part of the Reimagine Flood Park process from 2015 – 2020. With exception of the formal promenade, the updated plan retains the recreational, play spaces, picnic and other features included in the 2020 Landscape Plan.

**Location of Recreational Facilities** – Most of the recreational facilities and the second multi-use field have been relocated to preserve native trees and to create better flow by grouping complimentary amenities. The multi-use fields have been reconfigured and consolidated in the north part of the park. This will preserve the “heart of the oak woodland” and create a more cohesive and flexible field configuration. The baseball outfield has been adjusted to 315 feet, so that the smaller multi-use field can be used concurrent with the baseball field. The tennis/pickleball courts have been relocated based on the new multi-use field layout and the basketball court has been relocated to avoid conflicts with the SFPUC Hetch Hetchy right-of-way. The sand volleyball court has been relocated to the area where the existing ‘informal’ volleyball court is located. The 100-foot buffer from recreational facilities along the east edge of the park is maintained.



**Tree Preservation** – The revised landscape plan honors the community’s interest in preserving native trees and the oak woodland by reconfiguring the layout of facilities and pathways to reduce the removal of existing trees. No heritage trees (greater than 48-inches in diameter) will need to be removed. Five significant oak trees (greater than 12-inches in diameter) and (16) significant non-native trees (greater than 12-inches in diameter) will need to be removed as part of the revised plan. Approximately 85% of all trees to be removed (54 of the 64 trees to be removed), are non-native trees that have limited ecological value.

**Central Gathering and Play Spaces** – The layout of the central gathering and play spaces has been updated based on the idea of a more open and flowing experience that responds to existing trees and buildings. The all-abilities play space has been expanded and combined with the adventure play area to create a unique and inclusive experience. A focal element and several community gathering spaces have been incorporated to create a dynamic new ‘heart of the park’. The adobe administration building will be seismically retrofitted and repurposed as a community event space that could include interpretive features.

**Picnic Areas** – The updated plan also includes the preservation and restoration of the large Oak Picnic Area and structures. The other existing reservable and drop-in picnic areas will be relocated throughout the park and will be redesigned to allow for better access and improved facilities. The revised landscape plan will preserve existing reservation and drop-in picnic site quantity and capacity.



# FLOOD PARK-UPDATED LANDSCAPE PLAN

- 1 DROP-OFF/ARRIVAL
- 2 FOCAL ELEMENT
- 3 GATHERING PLAZA
- 4 PRESERVED ADMINISTRATIVE OFFICE
- 5 AMPHITHEATER
- 6 ALL ABILITIES PLAY AREA
- 7 ADVENTURE PLAY
- 8 SEATING
- 9 BALLFIELD/MULTI-USE SPORT FIELD
- 10 MULTI-USE SPORT FIELD
- 11 BASKETBALL
- 12 TENNIS/PICKLEBALL
- 13 SAND VOLLEYBALL
- 14 PUMP TRACK
- 15 TRAIL W EXERCISE STATION
- 16 RESERVABLE PICNIC AREA
- 17 RENOVATED OAK PICNIC AREA
- 18 DEMONSTRATION GARDENS
- 19 RESTROOMS
- 20 EXISTING PARKING LOT
- 21 NEW PARKING
-  EXISTING TREES
-  PROPOSED TREES

Linear promenade not shown in plans to avoid additional tree removals.

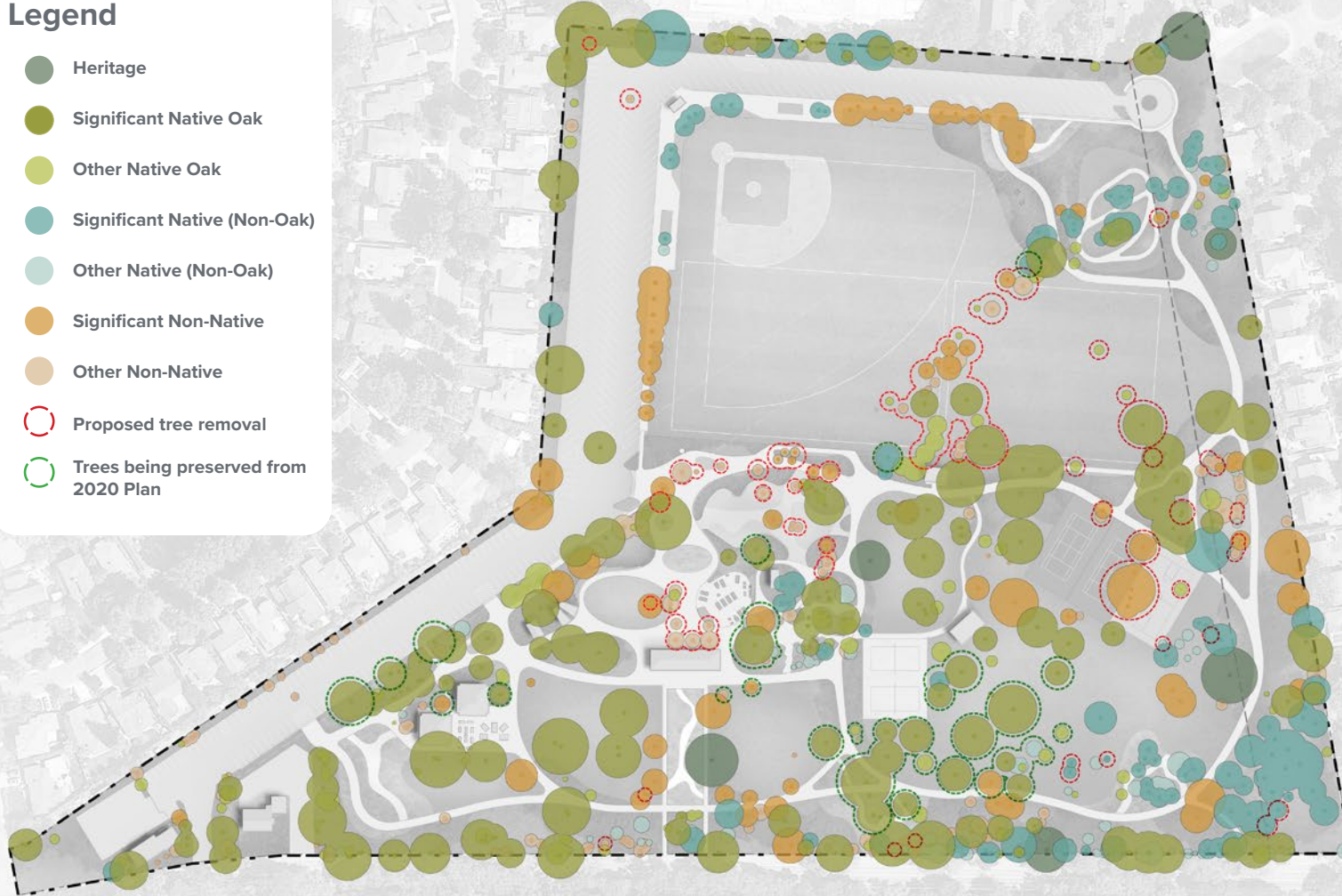




# FLOOD PARK-TREE PRESERVATION

## Legend

- Heritage
- Significant Native Oak
- Other Native Oak
- Significant Native (Non-Oak)
- Other Native (Non-Oak)
- Significant Non-Native
- Other Non-Native
- Proposed tree removal
- Trees being preserved from 2020 Plan



## TREE PRESERVATION:

Compared with the 2020 landscape plan and tree removals in the EIR the updated plan would preserve:

**28 Significant Trees (12" DBH or greater)**

Native Oak Trees: **+18**

Native Trees (non-oak): **+5**

Non-Native Trees: **+5**

**Projected Tree Removals associated with the updated plan include:**

**(0) Heritage Trees**

**21 Significant Trees (12" DBH or greater)**

(5) Significant Oak Trees

(0) Significant Native Trees (non-oak)

(16) Significant Non-Native Trees

**43 Other Trees (less than 12")**

(5) Native Oak Trees

(0) Native Trees (non-oak)

(38) Non-Native Trees

**TOTAL TREES TO BE REMOVED: 64**

*Note: There are an additional 32 trees that need to be removed due to poor health and condition. Removal of these trees is unrelated to the Realize Flood Park Project. These tree removals are included in the diagram.*

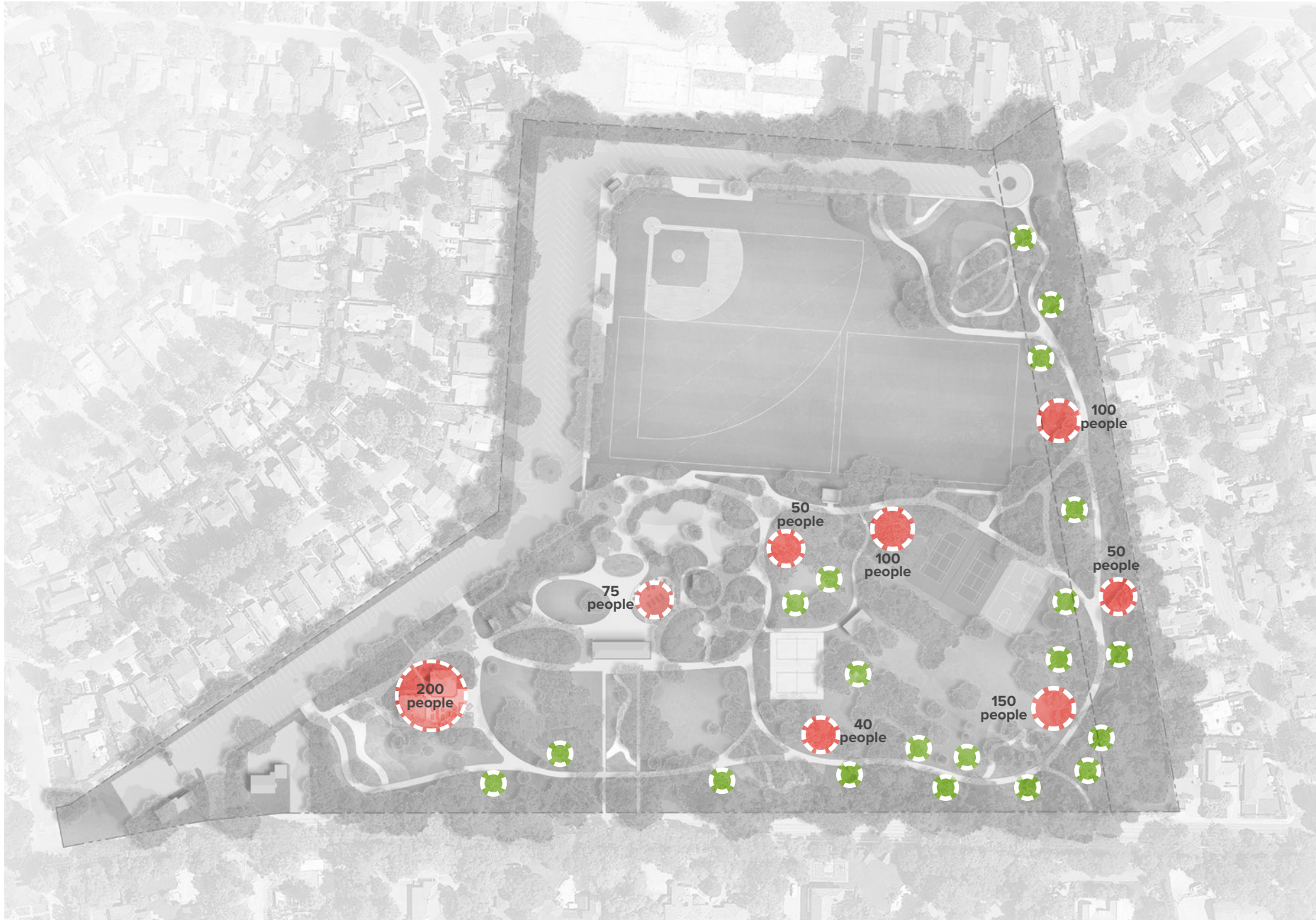


# CENTRAL GATHERING SPACES





# PICNIC AREAS



## PICNIC AREAS:

 Reservable Sites








 Drop-in Sites



# DEMONSTRATION GARDENS



## GARDEN TYPES:

-  Pollinator Garden
-  Feature Garden
-  Oak Understory Garden
-  Redwood Understory Garden
-  Drought-Tolerant Garden
-  Entrance Garden
-  Edge Understory (Habitat Planting)